

## FZW32-12/24/40.5 Outdoor HV Vacuum Disconnect Load Break Switch

### Summary

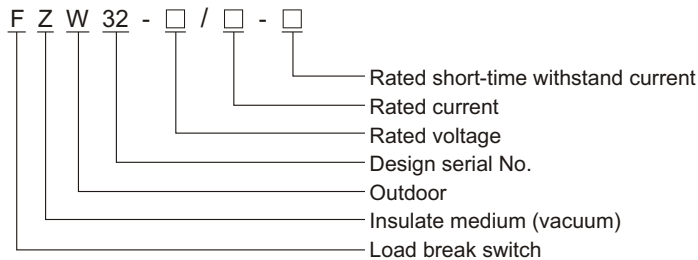
FZW32-12/24/40.5 Outdoor AC high voltage disconnect vacuum load break switch is a new product adopts domestic existing mature load break switch production experience and overseas advanced technology to design and manufacture. the load break switch is composed of disconnect blade, vacuum interrupter and operation mechanism. vacuum extinguishing arc, there are merits as strong extinguishing arc ability, reliable performance, long lifetime, small volume, no explosive danger and no pollution to environment. It accords with standards of IEC62271-103 High voltage switches.



### Ambient condition

1. Altitude:  $\leq 1000\text{m}$ ;
2. Ambient temperature:  $-30^{\circ}\text{C} \sim +40^{\circ}\text{C}$ ;
3. Wind speed:  $\leq 34\text{m/s}$ ;
4. Pollution degree:  $\leq \text{IV}$  ;
5. Earthquake intensity:  $\leq 8$  degree;
6. Ice thickness:  $\leq 10\text{mm}$ .

### Model



### Technical specification

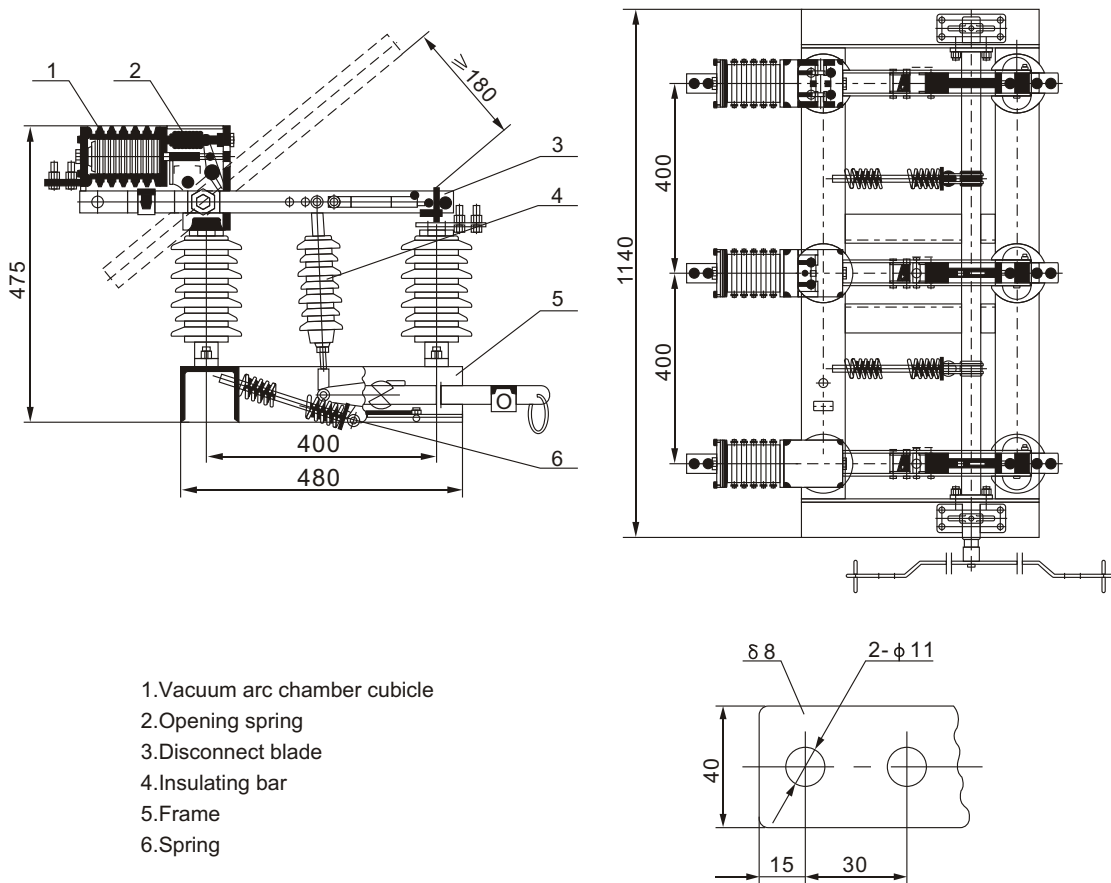
No.	Item		Unit	Data		
1	Rated voltage		kV	12/24	40.5	
2	Rated current		A	630	1250	
3	Rated power frequency		Hz	50/60	50/60	
4	Rated peak withstand current		kA	50	63	
5	Rated short-time withstand current		kA	20	25	
6	Rated short-circuit duration		s	4	4	
7	Rated active load breaking current		A	630	1250	
8	Rated loop breaking current		A	630	1250	
9	Rated cable charging current		A	10	10	
10	5% rated active load breaking current		A	31.5	63	
11	Rated power transformer breaking current		kVA	1250	1250	
12	Rated short-circuit making current		kA	50	63	
13	Main loop resistance		$\mu\Omega$	$\leq 90$	$\leq 100$	
14	1min. power frequency withstand voltage	Dry	phase to phase	kV	42/50	95
			phase to earth	kV	49/60	115
		Wet	phase to phase	kV	30/40	85
15	Lightning impulse withstand voltage(peak)	phase to phase	kV	75/125	185	
		phase to earth	kV	85/145	215	

16	Mechanical life	Times	10000	10000
17	Three phase closing asynchronous	ms	≤5	≤5
18	Direction rotating of making contact blade	mm	≤2	≤2
19	Main contact blade pressure	N	300 ± 30	420 ± 42
20	Distance between electric parts and phase to earth	mm	≥200	≥380
21	Rated operating moment	Nm	≤300	≤300

### LBS with vacuum arc extinguish chamber

No.	Item	Unit	Data	
1	Contact distance	mm	5 ± 1	18 ± 1
2	Average breaking speed	m/s	1.1 ± 0.2	1.6 ± 0.2
3	Three phase breaking asynchronous	ms	≤5	≤5
4	Three phase making asynchronous	ms	≤5	≤5

### Structure feature



FZW32-12 General Arrangement & Dimension Drawing